

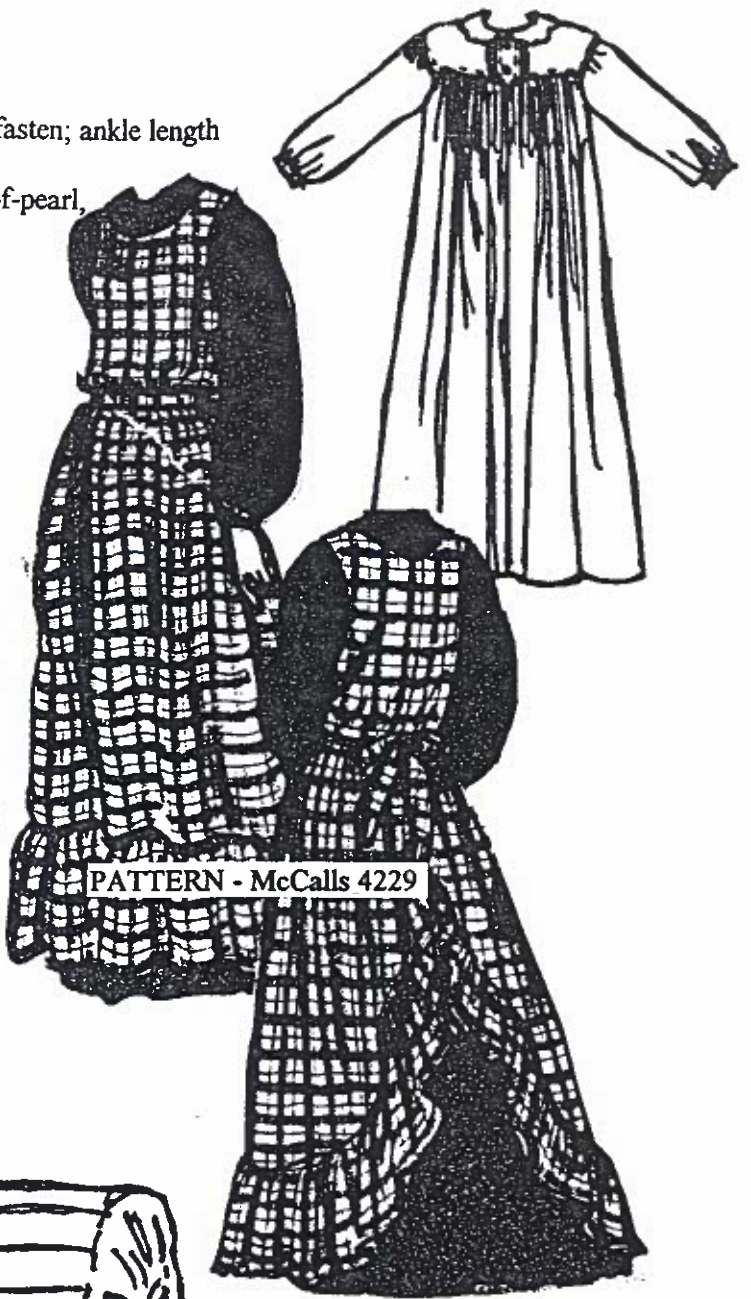
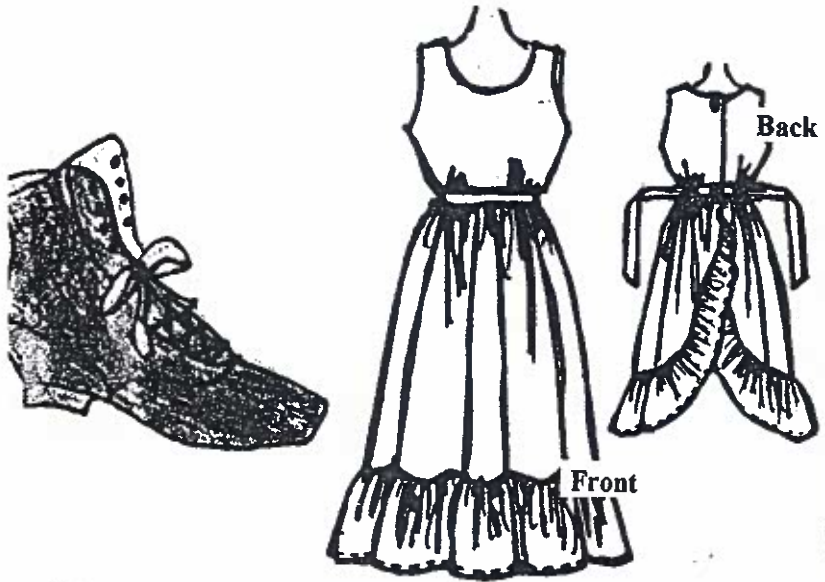
# 1860'S HOMESTEAD DOCENTS - LADIES

**SKIRT** - full skirt gathered on waistband; hooks & eyes or button to fasten; ankle length

**BODICE OR BLOUSE** - drop shoulder, buttons of wood or mother-of-pearl, blouse can be worn tucked in or left out

**PRAIRIE DRESS** - 100% cotton; ankle length (see picture)

**APRON** - linen or muslin, full or half styles, with or without pockets



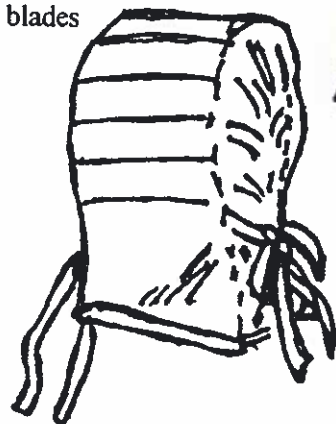
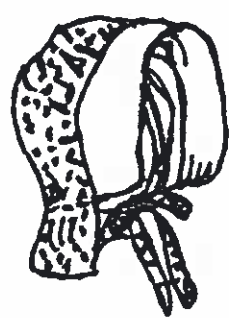
**VEIL COAT** - 100% cotton full length of skirt, elastic band fine

**TOCKINGS** - dark brown or black, at least knee high; plain

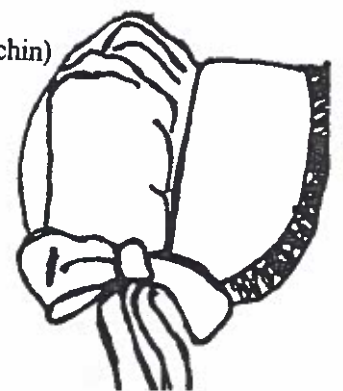
**HOES** - black or brown leather, inconspicuous but comfortable, avoid high heels; no "waffle" soles; ice skates with blades removed can be used

**SHAWL** - knitted or crocheted of natural color wool yarn

**BANDANA** - red or blue - 100% cotton



**HAT** - Bonnet (same material as skirt, bodice or apron), or straw hat (floppy style, ribbon around top to tie under chin)



**HAIRSTYLE** - long hair pulled back into a bun style or simple braid down back, short hair very simply done, all bangs very simple

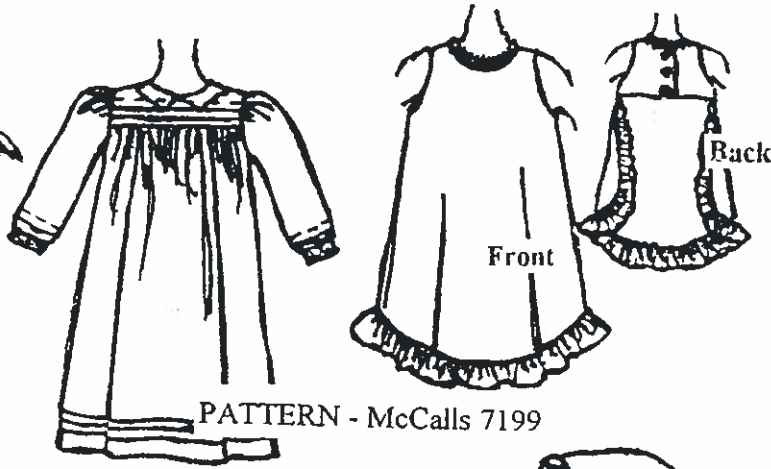
**ACCESSORIES** - no make-up fingernail polish or jewelry, except wedding rings allowed; basket helpful for carrying water, car keys, watches, etc.

1860'S HOMESTEAD JUNIOR DOCENTS - GIRLS

PRAIRIE DRESS - 100% cotton, length see below

PINAFORE - muslin or cotton, preferably full styles only

HAT - bonnet, 100% cotton



Pattern Available For Checkout

SHOES - black or brown leather, inconspicuous and comfortable;

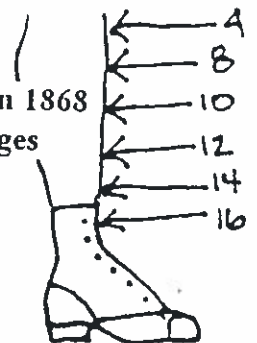
ice skates with blades removed can be used; no "waffle" soles

STOCKINGS - dark black or brown lotards or tight - 100% cotton; plain; wool look or cotton knit

PETTICOAT - muslin or cotton, same length of dress



Length of girls dresses in 1868  
The numbers indicate ages

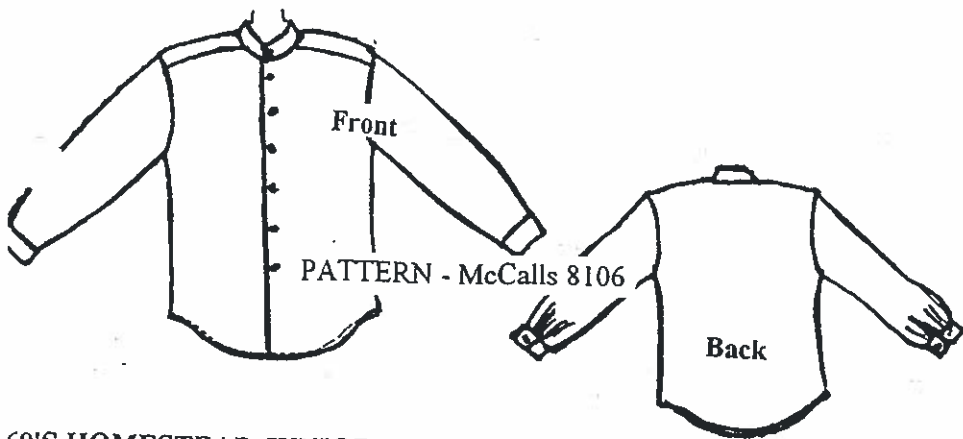


\*BANDANA - blue, 100% cotton

HAIRSTYLE - long and free flowing; single braid, braided pig tails tied with plain ribbon, yarn, thread, cloth strips or rawhide

ACCESSORIES - no jewelry, fingernail polish or make-up; a basket or a white or muslin or gunny sack helpful for carrying water, watches, etc.





**60'S HOMESTEAD JUNIOR DOCENTS - BOYS**

**ANTS** - 100% cotton or wool; no demin - one back pocket WITH A CINCH BELT and suspender buttons and a button fly. All buttons made of wood, metal or horn. No darts or pleats and straight legs. Appropriate pants are available at various period clothing outlets.

**UNDERWEAR SHIRT** - 100% cotton, red or natural in color, long sleeved, buttons of mother-of-pearl

**IRT** - 100% cotton, long sleeved, collar band only (see picture)

**ORK SUSPENDERS** - black or dark colored, leather tabs, preferably canvas; not elastic - not needed with overalls

**OS** - all leather, black or brown, short or tall, plain - no fancy stitching or "cowboy boots", square or round toe; no "waffle" soles

**T** - brown or black felt, leather or wool. Straw hats are fine (see picture)

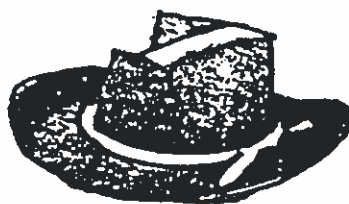
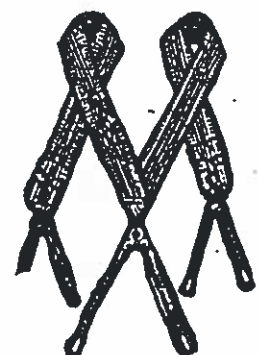
**NDANA** - red or blue - 100% cotton

**AWL** - knitted or crocheted of natural color wool yarn

**RSTYLE** - collar length or above

**ESSORIES** - eliminate all jewelry and watches; basket or white, muslin or gunny sack helpful for carrying water, watches, etc.

tional

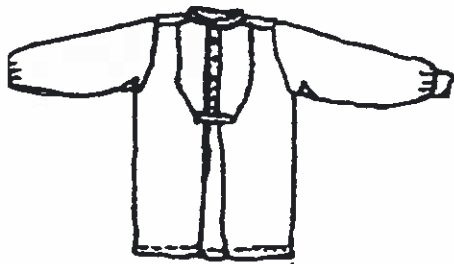


## 1860'S HOMESTEAD DOCENTS - MEN

**PANTS** - 100% cotton or wool; no demin - one back pocket WITH A CINCH BELT and suspender buttons and a button fly. All buttons made of wood, metal or horn. No darts or pleats and straight legs. Appropriate pants are available at various period clothing outlets.

**UNDERWEAR SHIRT** - 100% cotton, red or natural in color, long sleeved, buttons of mother-of-pearl

**SHIRT** - 100% cotton, long sleeved, collar band only (see picture)



This Pattern Available For Checkout



**WORK SUSPENDERS** - black or dark colored, leather tabs, preferably canvas; not elastic

**BOOTS** - all leather, black or brown, short or tall, plain - no fancy stitching or "cowboy boots", square or round toe; no "waffle" soles

**HAT** - brown or black felt or leather

\***VEST** - black, brown or dark blue wool or cotton

\***BANDANA** - red or blue - 100% cotton

\***SHAWL** - knitted or crocheted of natural color wool yarn

**HAIRSTYLE** - collar length or above

**ACCESSORIES** - eliminate all jewelry except pocket watch or wedding ring; white or muslin or gunny sack, (or basket), is helpful for carrying water, watches, car keys, etc.

\* Optional





## 1880'S WORKING RANCH DOCENTS - LADIES

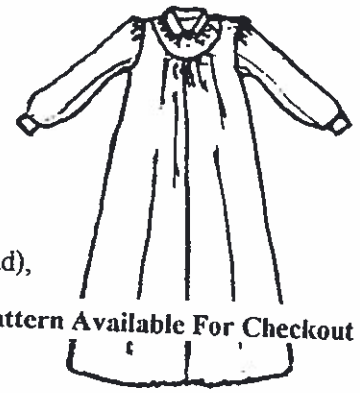


PRAIRIE DRESS - 100% cotton, ankle length

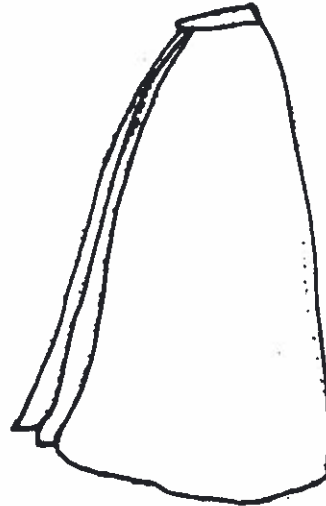
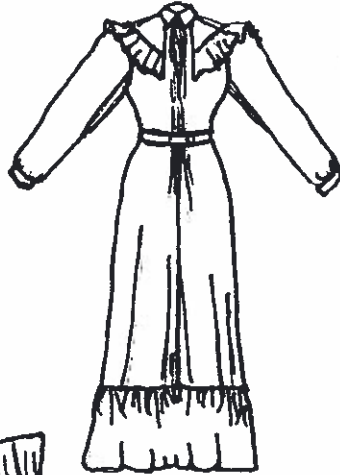
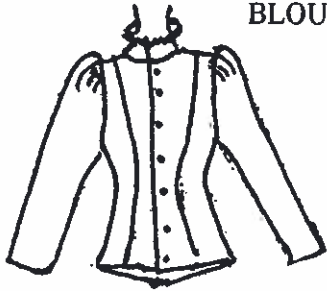
APRON - muslin or 100% cotton (must be worn with prairie dress, optional with skirt and blouse)

SKIRT - 100% cotton, gathered on a waistband (not as full as homestead), walking skirt style acceptable

BLOUSE - 100% cotton, Mother-of-pearl buttons or hooks & eye. Simple styles, avoid a lot of lace and fancy decorations



This Pattern Available For Checkout



DAY DRESS - see picture - Past Patterns 903

PETTICOAT - muslin or 100% cotton

HAT - Bonnet (same material as skirt, bodice or apron),  
or straw hat (floppy style, ribbon around top to tie under chin)

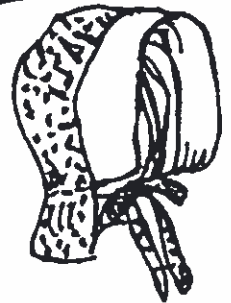
STOCKINGS - dark black or brown; at least knee high, plain

SHOES - black or brown leather, inconspicuous and comfortable;  
ice skates with blades removed can be used; no "waffle" soles

\*BANDANA - red or blue - 100% cotton

HAIRSTYLE - long hair pulled back into a bun style or simple braid down back,  
short hair very simply done, all bangs very simple

ACCESSORIES - No make-up, fingernail polish. A simple broach may be worn at collar,  
wedding ring allowed; a basket is helpful for carrying water, watches,  
car keys, etc.



**1880s ROCK LEDGE HOUSE AND CHAMBERS FARM - GIRLS**



This Pattern Available for Checkout

**\*Prairie Dress**



**Bonnet or Straw Hat**



**\*\*Child's Wrapper**



**\*\*Young Misses' Waist and Skirt**



**\*\*Child's Costume #1**

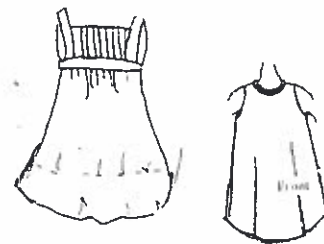
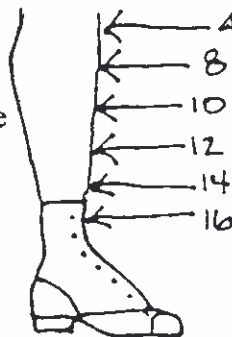


**Shoes** – black or brown leather; inconspicuous and comfortable; ice skates with the blades removed work well!



**\*\*Child's Costume #2**

Length of girls dresses in 1868 indicated by age



**\*Pinafore**

Stockings – black or dark brown leotards or tights – 100% cotton; plain; wool look or cotton knit

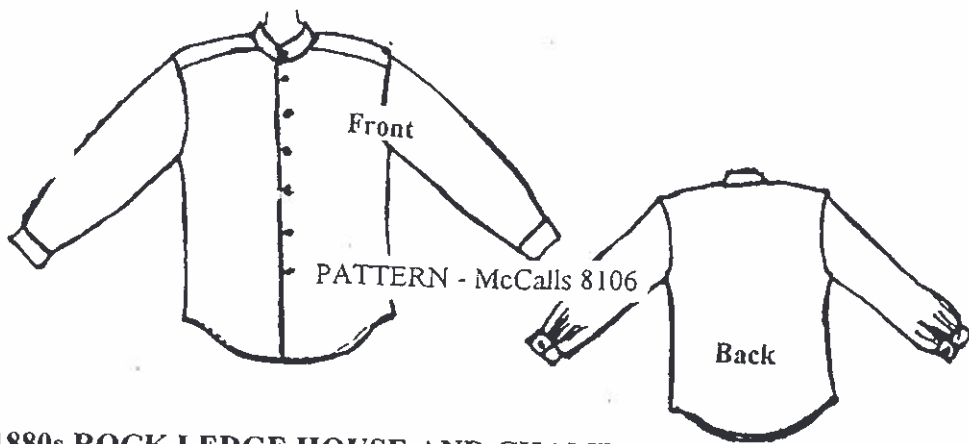
Petticoat – muslin or cotton; same length as dress or slightly shorter

Hairstyle – long and free flowing; single braid or braided pigtails tied with plain ribbon, yarn, thread, or cloth strips

Accessories – no jewelry, fingernail polish or make-up; a basket for carrying personal items is helpful.

\* Past Patterns

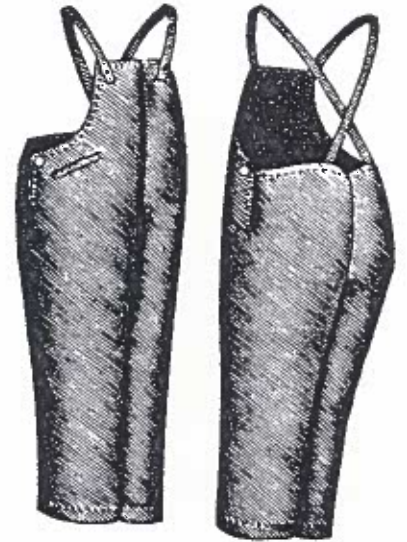
\*\*Garment Patterns 1889 with Instructions edited by Jules & Kaethe Klot



This pattern available for checkout

**1880s ROCK LEDGE HOUSE AND CHAMBERS FARM - BOYS**

**PANTS** - 100% cotton or wool, modified Levi 501's okay. Pants must have one back pocket **WITH A CINCH BELT**, suspender buttons and a button fly. All belt loops must be removed. No darts or pleats and straight legs. All buttons made of wood, metal or horn. Appropriate pants are available at various period clothing outlets.



\***UNDERWEAR SHIRT** - 100% cotton, red or natural in color, long sleeved, buttons of mother-of-pearl

**OVERALLS** - as pictured to the right; available from Period Clothing Library.

**SHIRT** - 100% cotton, long sleeved, collar band only (see picture)

"Victorian shirt" is also acceptable

**WORK SUSPENDERS** - black or dark colored, leather tabs, preferably canvas; not elastic-not needed with overalls

**BOOTS** - all leather, black or brown, short or tall, plain - no fancy stitching or "cowboy boots", square or round toe; no "waffle" soles

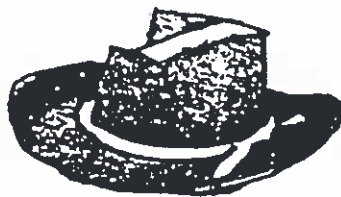
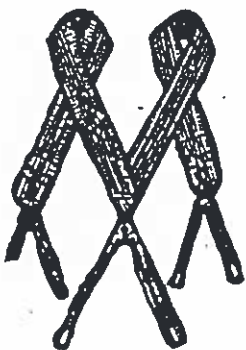
**HAT** - brown or black felt or leather; natural straw or newsboy styles also fine

\***SHAWL** - knitted or crocheted of natural color wool yarn

\***HAIRSTYLE** - collar length or above

\***ACCESSORIES** - eliminate all jewelry and watches; basket or white, muslin or gunny sack helpful for carrying water, watches, etc.

\*Optional



**1880'S WORKING RANCH DOCENTS - MEN**

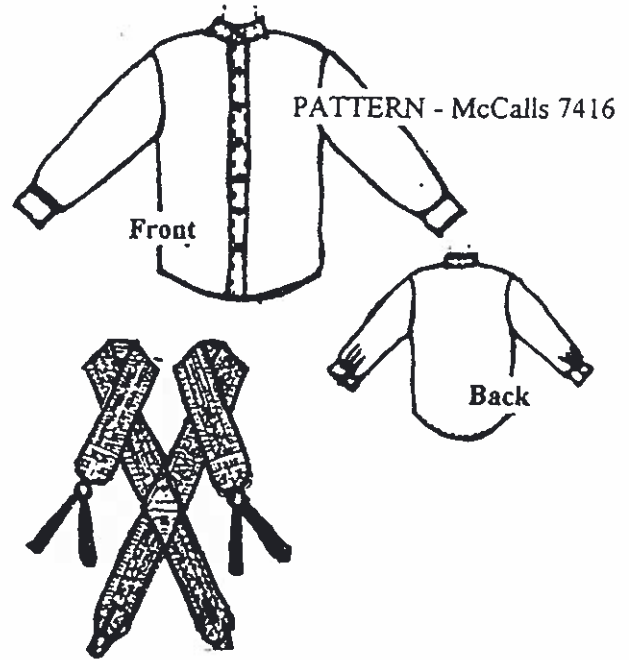
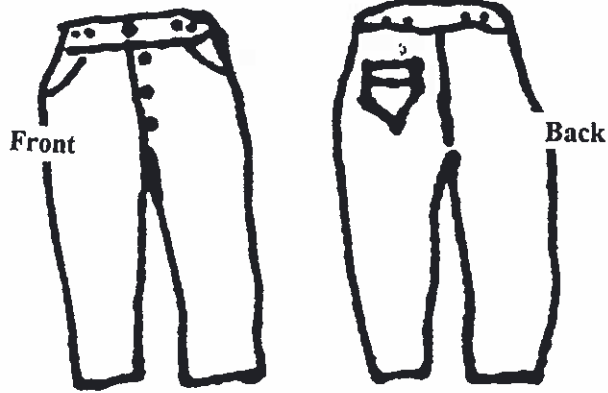
**PANTS** - 100% cotton or wool, modified Levi 501's okay. Pants must have one back pocket **WITH A CINCH BELT**, suspender buttons and a button fly. All belt loops must be removed. No darts or pleats and straight legs. All buttons made of wood, metal or horn. Appropriate pants are available at various period clothing outlets.

**UNDERWEAR SHIRT** - 100% cotton, red or natural in color, long sleeved, buttons of mother-of-pearl

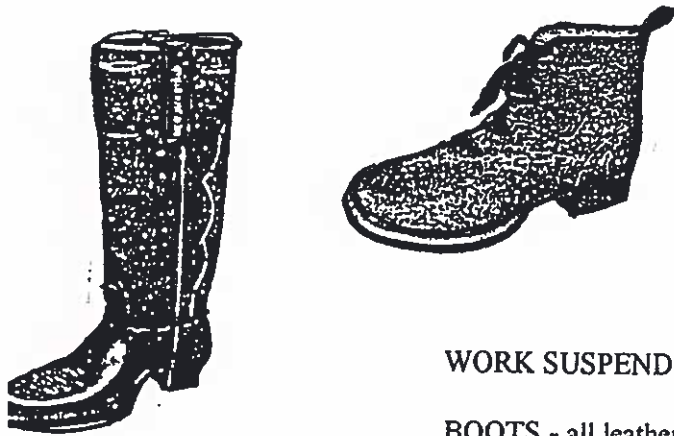
**SHIRT** - 100% cotton, long sleeved, collar band only (see picture)  
"Victorian shirt" is also acceptable



This Pattern Available For Checkout



PATTERN - McCalls 7416



**WORK SUSPENDERS** - black or dark colored, leather tabs, preferably canvas; not elastic

**BOOTS** - all leather, black or brown, short or tall, plain - no fancy stitching or "cowboy boots", square or round toe; no "waffle" soles

**HAT** - brown or black felt or leather; natural straw is also fine

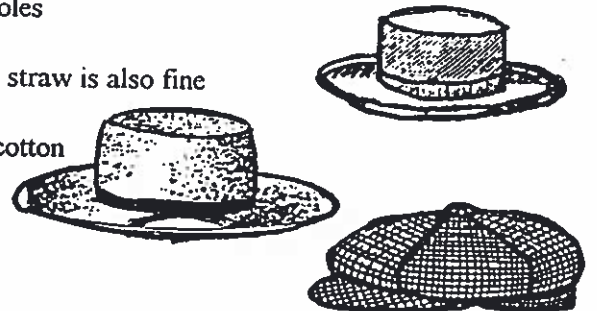
\***VEST** - black, brown or dark blue wool or cotton

\***BANDANA** - red or blue - 100% cotton

**HAIRSTYLE** - collar length or above

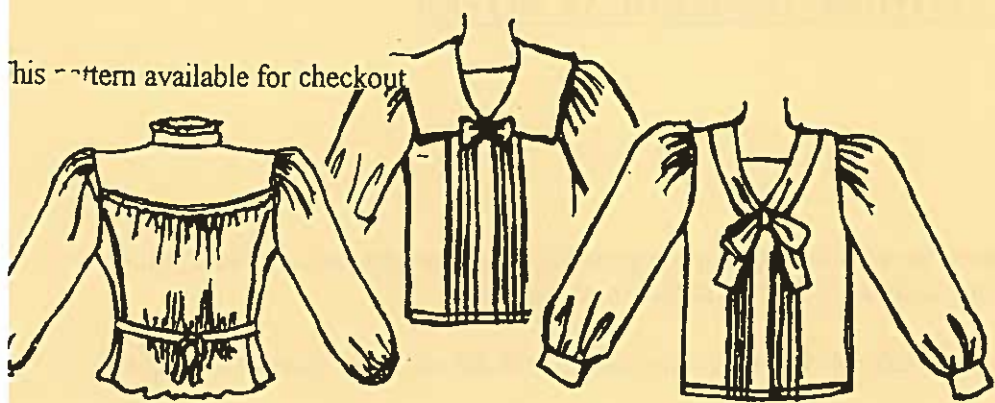
**ACCESSORIES** - eliminate all jewelry except pocket watch or wedding ring  
A basket or a white or muslin or gunny sack helpful for carrying water, watch, car keys, etc.

\* Optional

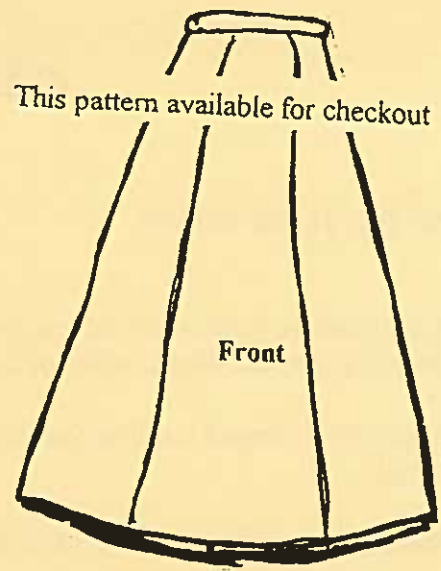




This pattern available for checkout



This pattern available for checkout



**1907 ORCHARD HOUSE JUNIOR DOCENTS - GIRLS**

**SKIRT** - 100% cotton; decoration of ribbon, braid etc. is acceptable around hemline; walking skirt style (see picture); Note lengths below

**BLOUSE** - Gibson girl or sailor styles - 100% cotton; lace is optional; buttons of other-of-pearl or hooks and eyes.

\***CAMISOLE** - white undershirt, preferably sleeveless. This is a must for very light colored blouses! (See picture) Can be combined as one with a petticoat

**PETTICOAT** - cotton or muslin, same length as skirt

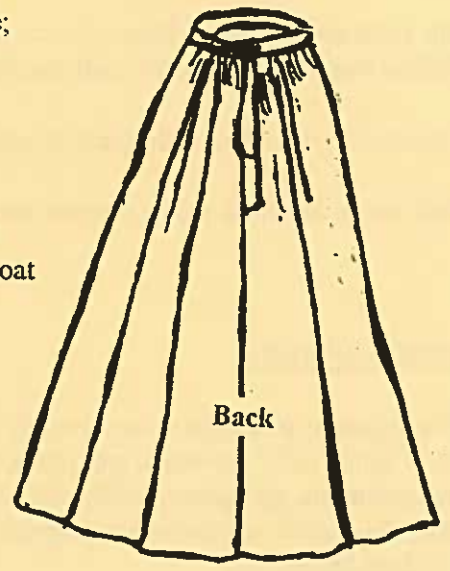
\***APRON** - white cotton or muslin 100% cotton, bib type with sash tie in back; patch pockets acceptable

**STOCKINGS** - dark and plain; at least knee high

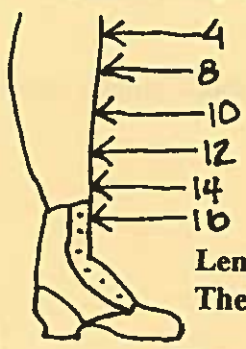
**SHOES** - dark or black leather; inconspicuous and comfortable; no "waffle" soles

**HAIRSTYLE** - Long hair pulled back into a bun style, short hair very simply done, all bangs very simple, simple ribbon or bow acceptable

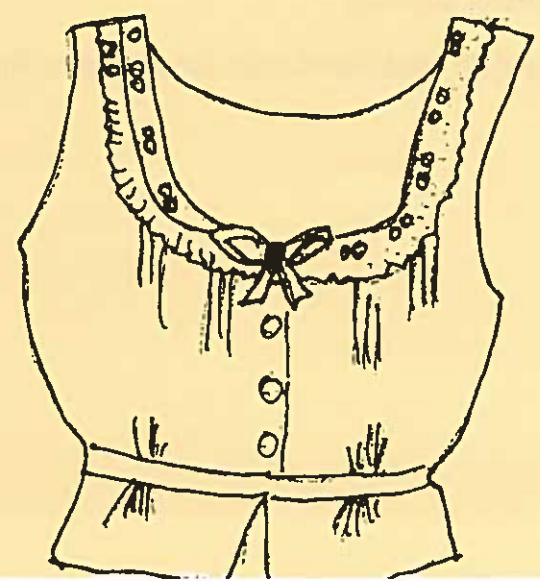
**ACCESSORIES** - no eye make-up, light powder is allowed; no fingernail polish; a simple broach may be worn at collar or pinned on right or left breast; Basket is helpful for carrying water, car keys, watches, etc.

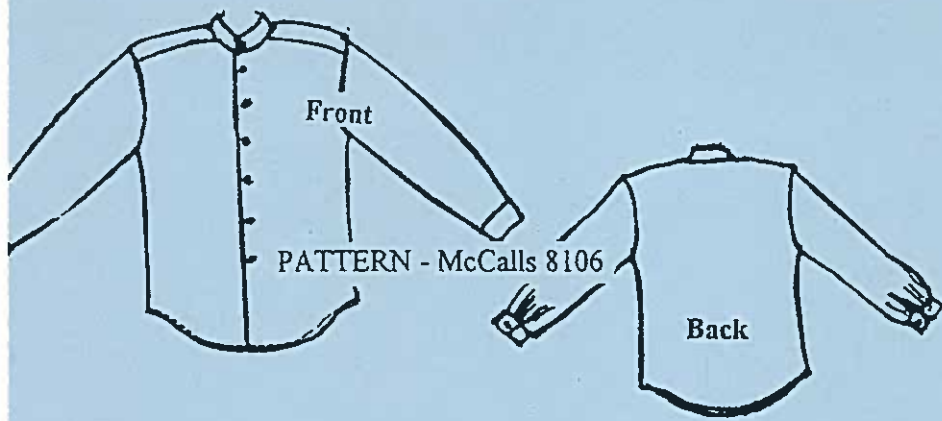


\* Optional



Length of girls dresses in 1868  
The numbers indicate ages





907 ORCHARD HOUSE JUNIOR DOCENTS - BOYS

**PANTS** - plain, dark or light wool or cotton; button fly; no darts or pleats; straight legs; belt loops removed and suspender buttons added; back pocket must be inset if at all; Knickers are acceptable up to age 15; (can be made from an outgrown pair of dress pants (styles as stated above)

**SHIRT** - Victorian style shirt; 100% cotton and long sleeved, buttons of mother-of-pearl; collar band only style (see picture)

**VEST** - wool or linen

**DRESS SUSPENDERS** - navy, brown, black, red; leather tabs. Narrower than work suspenders; No elastic please!

**TIE** - silk or satin; black, plaid colored, paisley or stripes

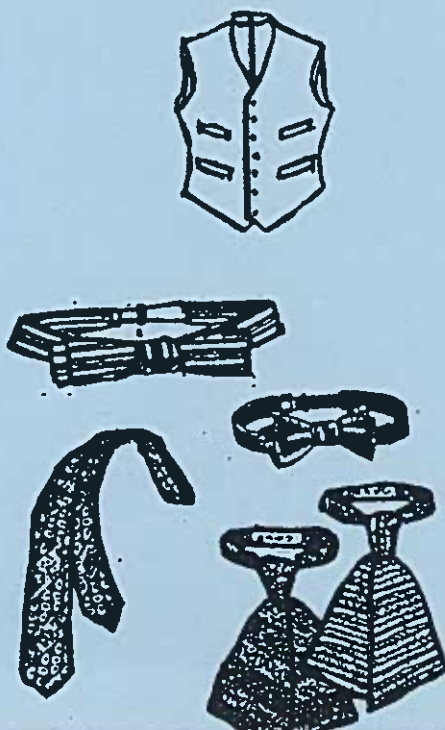
**SOCKS** - dark or light depending on color of pants

**SHOES** - dark black or brown; inconspicuous and comfortable, please no "waffle" soles

**HAIRSTYLE** - collar length or above

**ACCESSORIES** - eliminate all jewelry except pocket watch; basket or white sack helpful for carrying water, watches, etc.

Optional

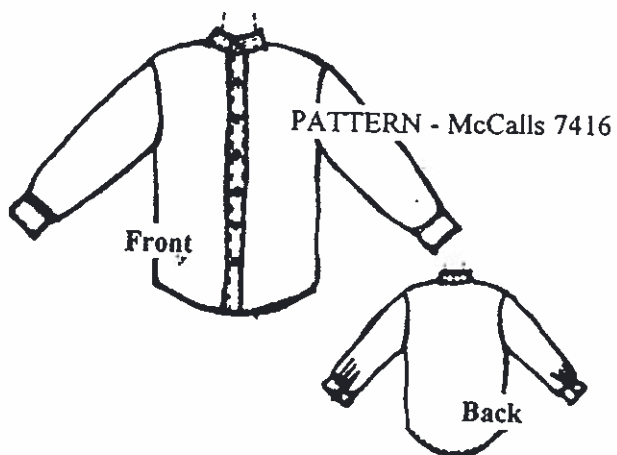


## 1907 ORCHARD HOUSE DOCENTS - MEN

**PANTS** - plain, dark or light wool or cotton; button fly; no darts or pleats; straight legs; belt loops removed and suspender buttons added; back pocket must be inset if at all

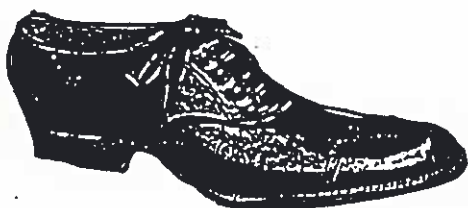
**SHIRT** - Victorian style shirt; 100% cotton and long sleeved, buttons of mother-of-pearl; collar band only style (see picture)

\*Vest - wool or linen



This Pattern Available For Checkout

**DRESS SUSPENDERS** - navy, brown, black, red; leather tabs.  
Narrower than work suspenders; No elastic



**TIE** - silk or satin; black, plaid colored, paisley or stripes

**SOCKS** - dark or light depending on color of pants

**SHOES** - dark black or brown; inconspicuous and comfortable, please no "waffle" soles

**HAIRSTYLE** - collar length or above

**ACCESSORIES** - eliminate all jewelry except pocket watch or wedding ring; a basket or a white sack helpful for carrying watch, water, car keys, etc.

\* Optional